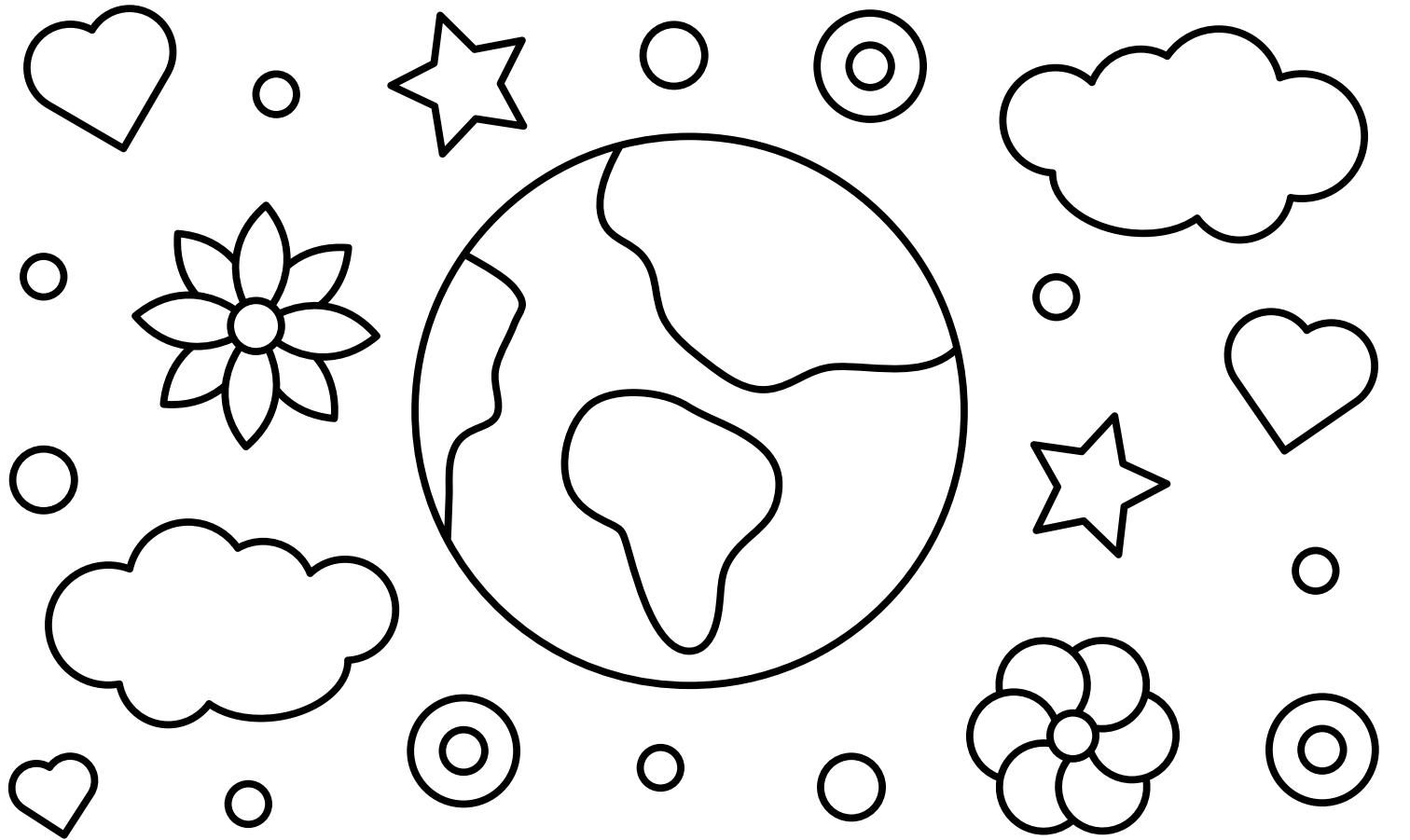


CELEBRATE EARTH DAY



Caring for Uñci Makā
Grandmother Earth

EVERY DAY.

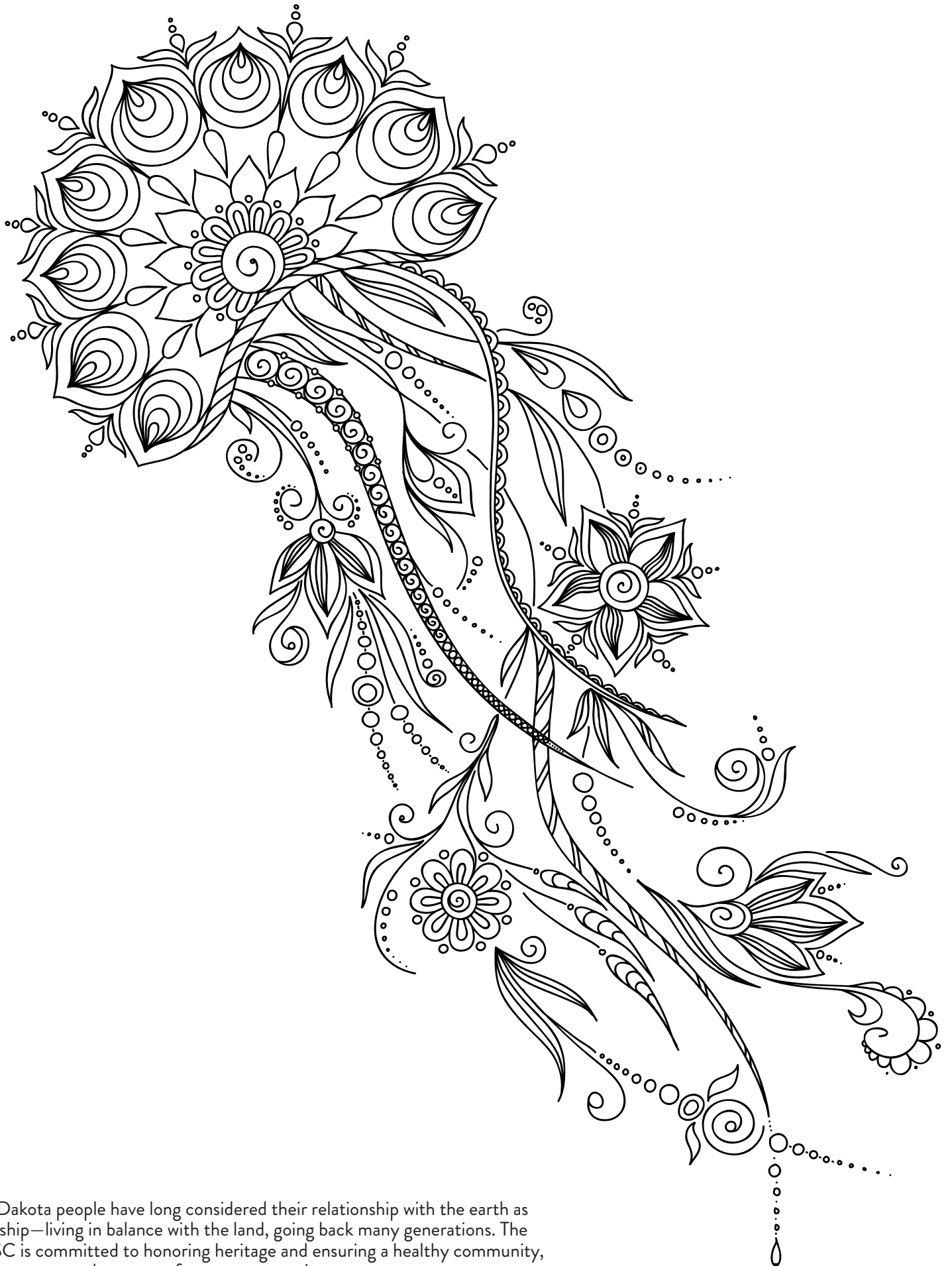


EARTH DAY.

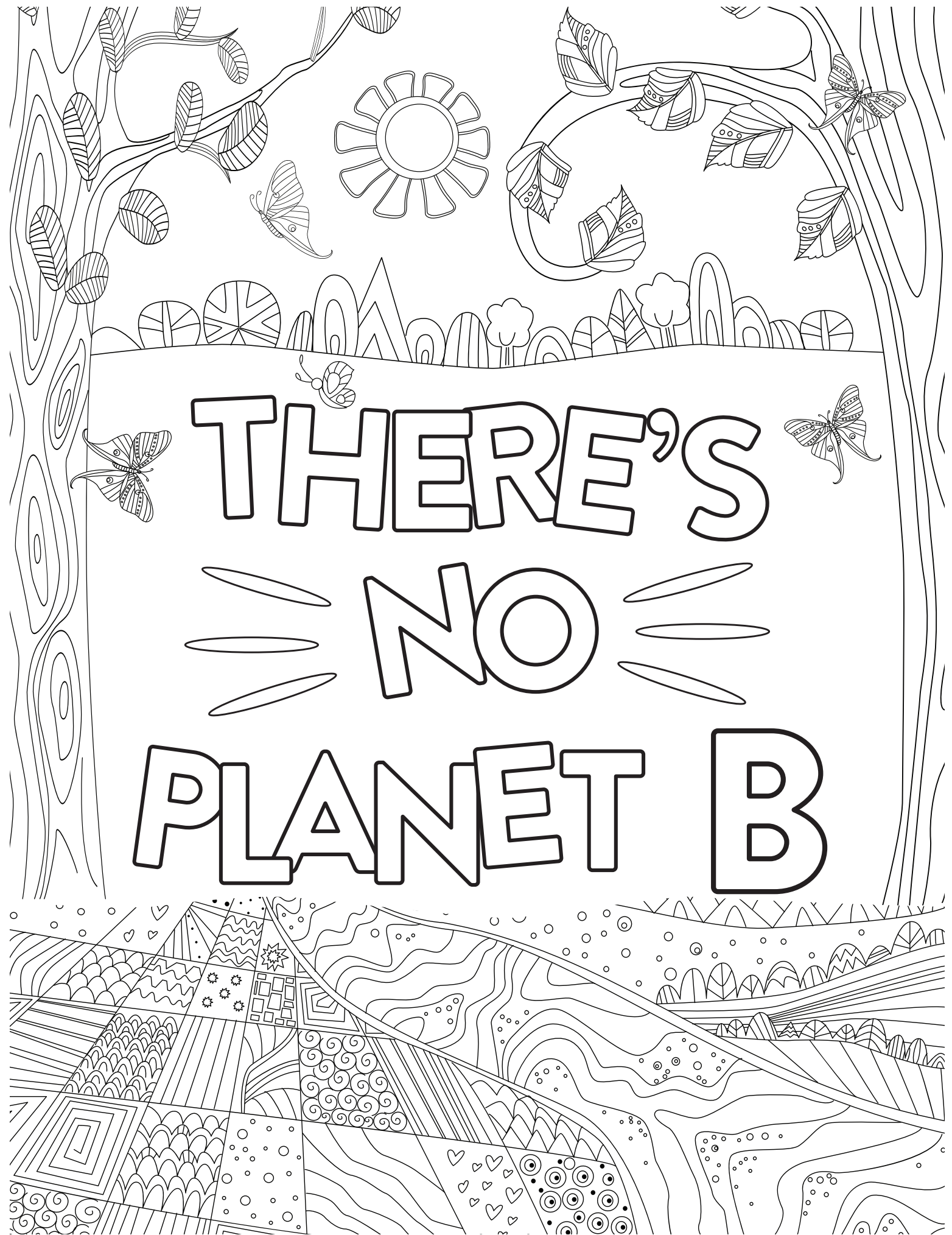


NATIVEGREEN

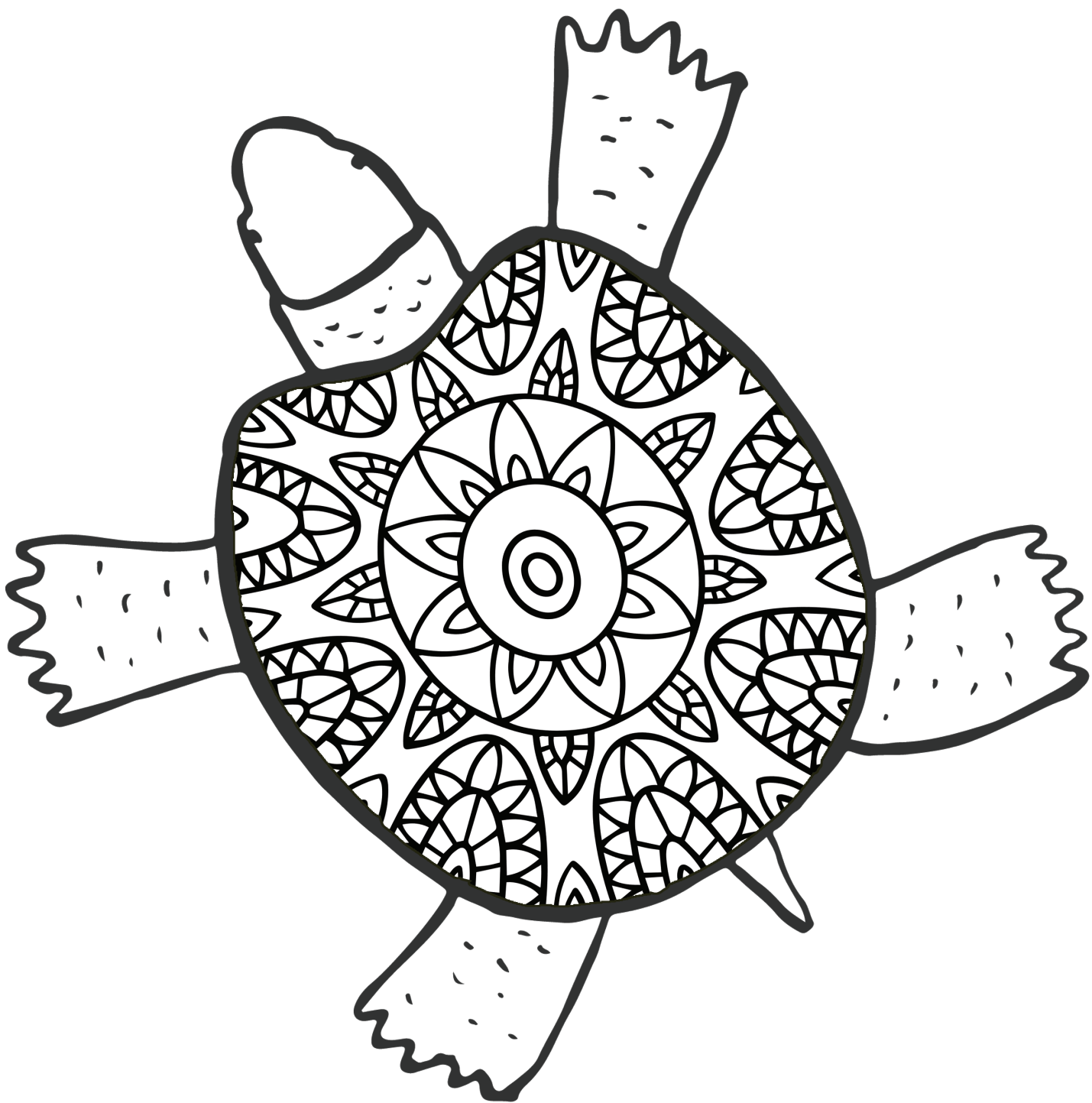
Caring for *Ujci Maŋa*, Grandmother Earth, is at the heart of what the Shakopee Mdewakanton Sioux Community (SMSC) strives to do—now and for future generations. Whether it is restoring prairies, forests, and wetlands or encouraging native plants, animals, and insects to make our lands their home, the tribe employs multiple land stewardship programs as part of NativeGreen to help fulfill our mission of being a good steward of the earth.



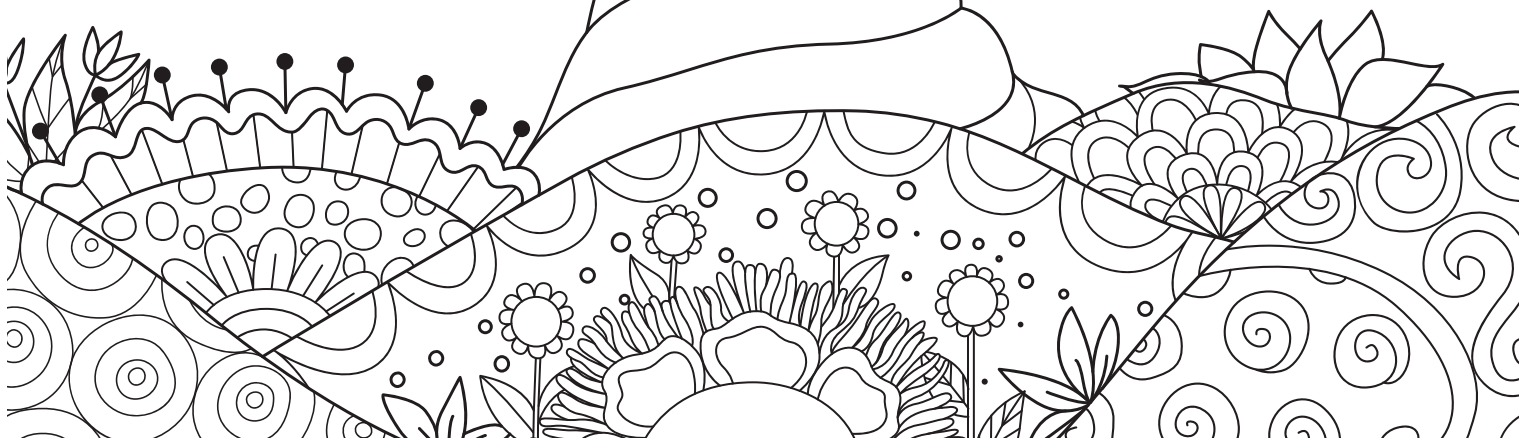
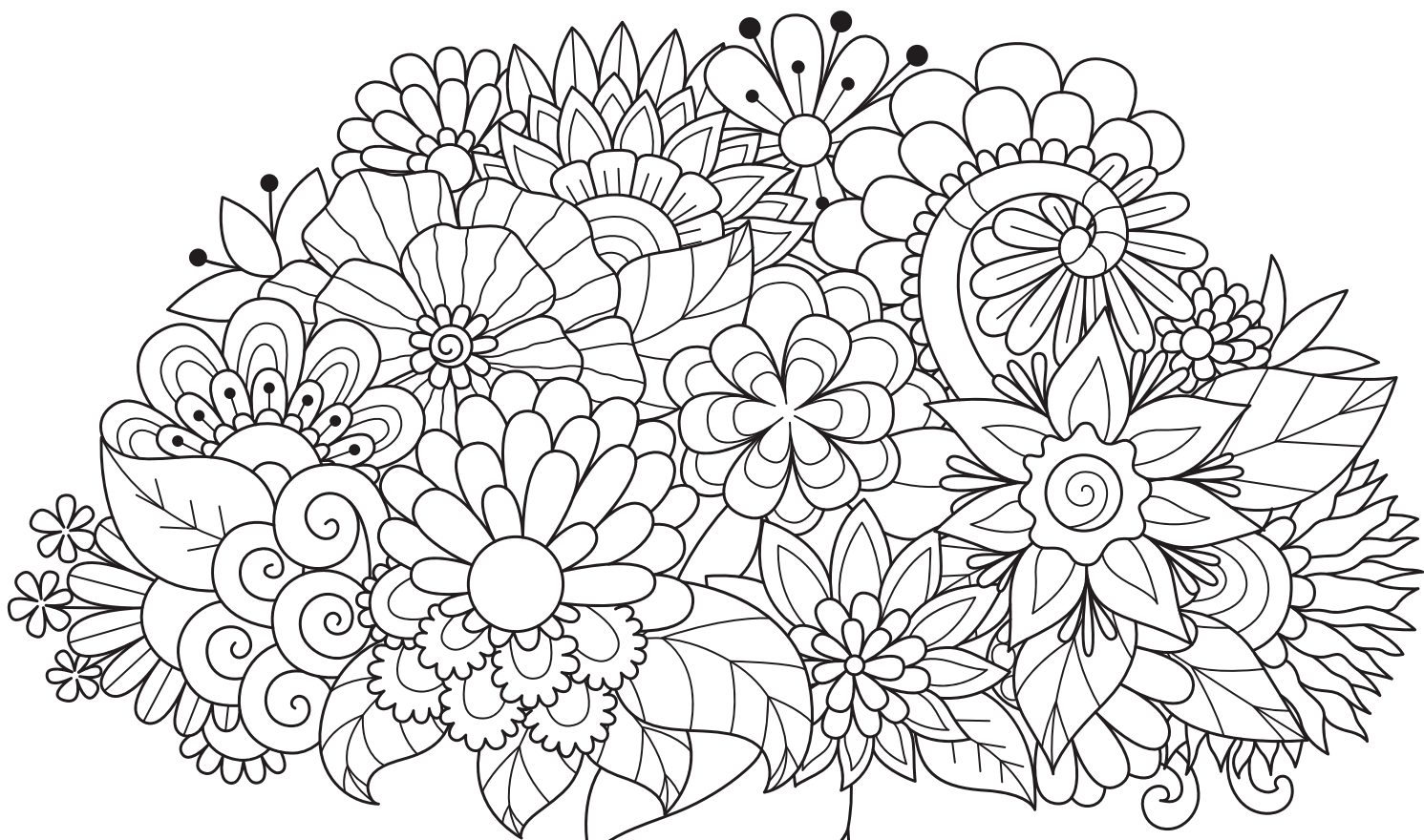
The Dakota people have long considered their relationship with the earth as a kinship—living in balance with the land, going back many generations. The SMSC is committed to honoring heritage and ensuring a healthy community, environment, and economy for every generation to come.

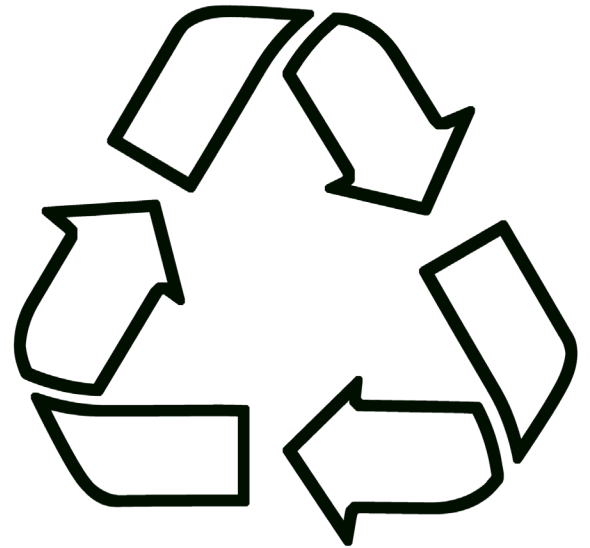


THERE'S
NO
PLANET B









PEACE LOVE RECYCLE



The SMSC is a federally recognized, sovereign Dakota tribal government located in Scott County, Minnesota.